

宁波欧乐机械有限公司  
NINGBO OULE MACHINE CO., LTD.

宁波德克刀具有限公司  
NINGBO DEREK TOOLS CO., LTD.

营销总部 SALES CENTER

地址：浙江省宁波市庄市中官西路创E慧谷德克大楼  
Add: DEREK Building, No. 777, Zhongguan Xi Rd, Ningbo, China 315201  
电话/ Tel: 0574-26286999  
传真/ Fax: 0574-26283999  
邮箱/ E-mail: sales@derekmetal.com  
网址/ Web: www.derekmetal.com

国际贸易 OVERSEAS

电话/ Tel: +86-574-26287772  
邮箱/ E-mail: sales1@derekmetal.com  
网址/ Web: www.derekttools.com

江苏分部 JIANGSU BRANCH

电话/ Tel: 0512-57777308 57777309  
传真/ Fax: 0512-57777309

广东分部 GUANGDONG BRANCH

电话/ Tel: 0769-81199996 85305802  
传真/ Fax: 0769-81199995



我们保留技术更新、改善产品权利  
We reserve the rights to update the products  
specification without prior notice.

**TOOLING  
SYSTEM**

# ABOUT DEREK

## 德克简介

宁波德克刀具有限公司是宁波欧乐机械有限公司旗下独立营销公司，经营规划自主品牌德克刀具、金易驰刀具等市场策略和发展方向，并在宁波设有占地 32 亩的一期工厂加工区及占地 30 亩的二期工厂加工区。

公司自 1993 年成立至今，20 多年专注于研发，是国内极少数拥有完整数控刀具现代化生产线的制造企业，拥有 30 多项核心专利，多项国际认证，享誉海内外客户及业内同行！

NINGBO DEREK TOOLS CO., LTD is the subordinate marketing enterprise of NINGBO OULE MACHINE CO.,LTD. DEREK TOOLS is responsible for marketing strategies, future direction of "DEREK" & "KEYEACH". DEREK has the factory covers an area of 21,333 square meters, and the second area of factory is about 20,000 square meters.

DEREK established in 1993, has been focused in research of CNC tools for more than 20 years.

DEREK is the modern manufactory who has a whole production line for CNC tools.

DEREK has more than 30 core technical patents and several International profession certifications

DEREK is becoming a world renowned brand in CNC tools area.

德克刀具每款产品都承载着“制造一流产品、提供一流服务”企业宗旨，“为客户提供数控刀具整体解决方案、助其更好的服务市场以获得全球性的成功”是德克刀具的企业诉求。

通过不断技术革新，德克刀具客户遍布70多个国家和地区，建立了初步的全球营销网络！通过大量专业人才和先进的高科技生产检测设备，在先进管理理念和国际质量体系的引导下，通过公司全体员工的智慧和不断辛勤努力开发的德克刀具以其新颖的结构、精湛的工艺、优越的性能，德克刀具获得了客户的一致好评和广泛认同。

We work with the most experienced engineers in high precise tools area, and we have the testing equipments to make sure our tools are qualified. During the past years, we focused on the further development, working with high-tech research institutions all over the world. With our efforts, we won an award of patent of 0.002mm precision adjustmet for FBH micro boring tools. Meanwhile, we improved the whole factory management level. Today, Derek enjoys good reputation among the CNC tools field.



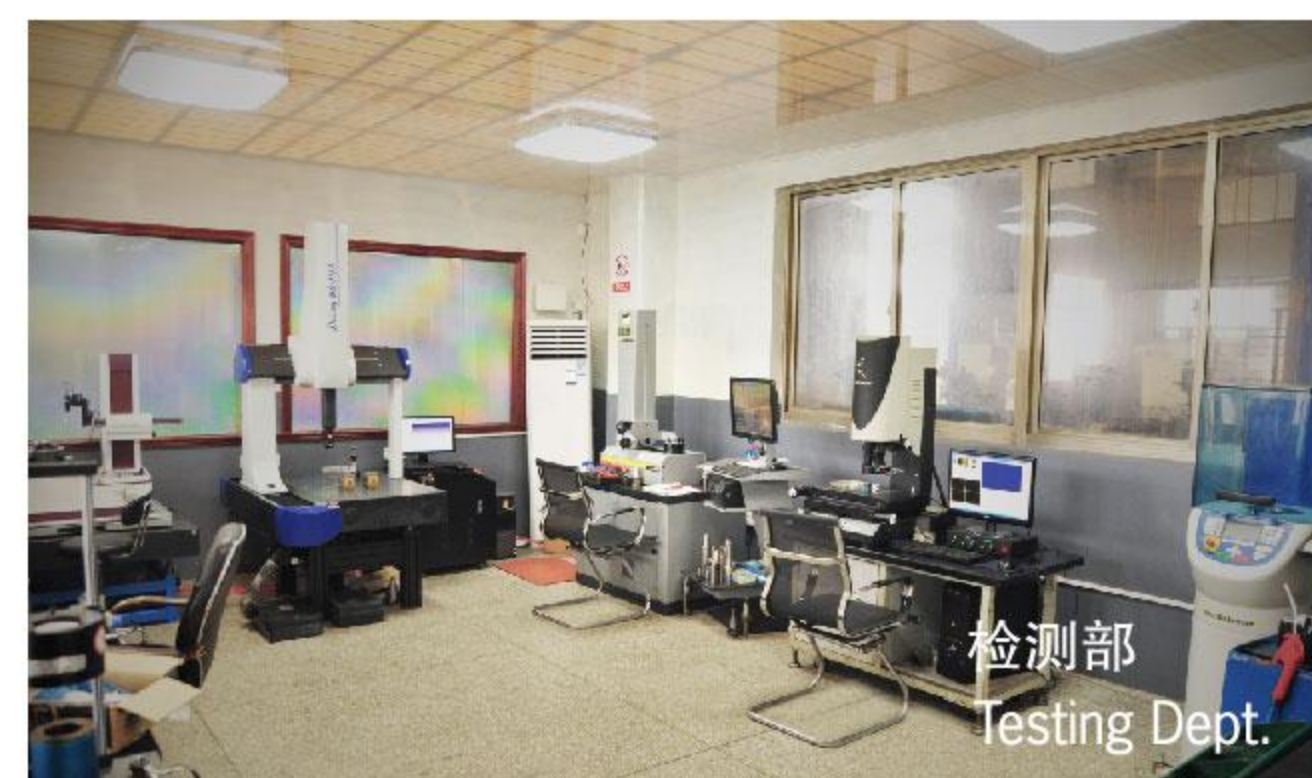
工厂1  
Factory I



工厂2  
Factory II



工厂3  
Factory III



检测部  
Testing Dept.

# DHP-Z/DSK-Z

DHP-Z Adjustable Hydraulic Chuck/DSK-Z Adjustable Precision Collet Chuck  
DHP-Z 可调液压刀柄/DSK-Z 可调精密筒夹刀柄

## 特点 / Feature

- 支持刀具无限接近于0跳动的轴向与径向调整。
- 适用于PCD/CBN精加工刀具以及整体合金类铰刀。
- 基于分布紧密的定位螺丝，可有效减少沉降，从而长期保持高精度。

- The tool has infinitesimal runout on axial and radial adjustment.
- Suitable for use in PCD/CBN fine machining tools and solid alloy reamer.
- Reduced settlement properties provides highest accuracy over a long period by closely arranged setting screws.



加工中心刀柄  
TOOL HOLDERS

钻头刀柄  
DRILL HOLDER

铰刀刀柄  
REAMER HOLDER

铣刀刀柄  
MILL HOLDER

刀柄配件  
HOLDER ACCESSORIES

# DHP-Z/DSK-Z

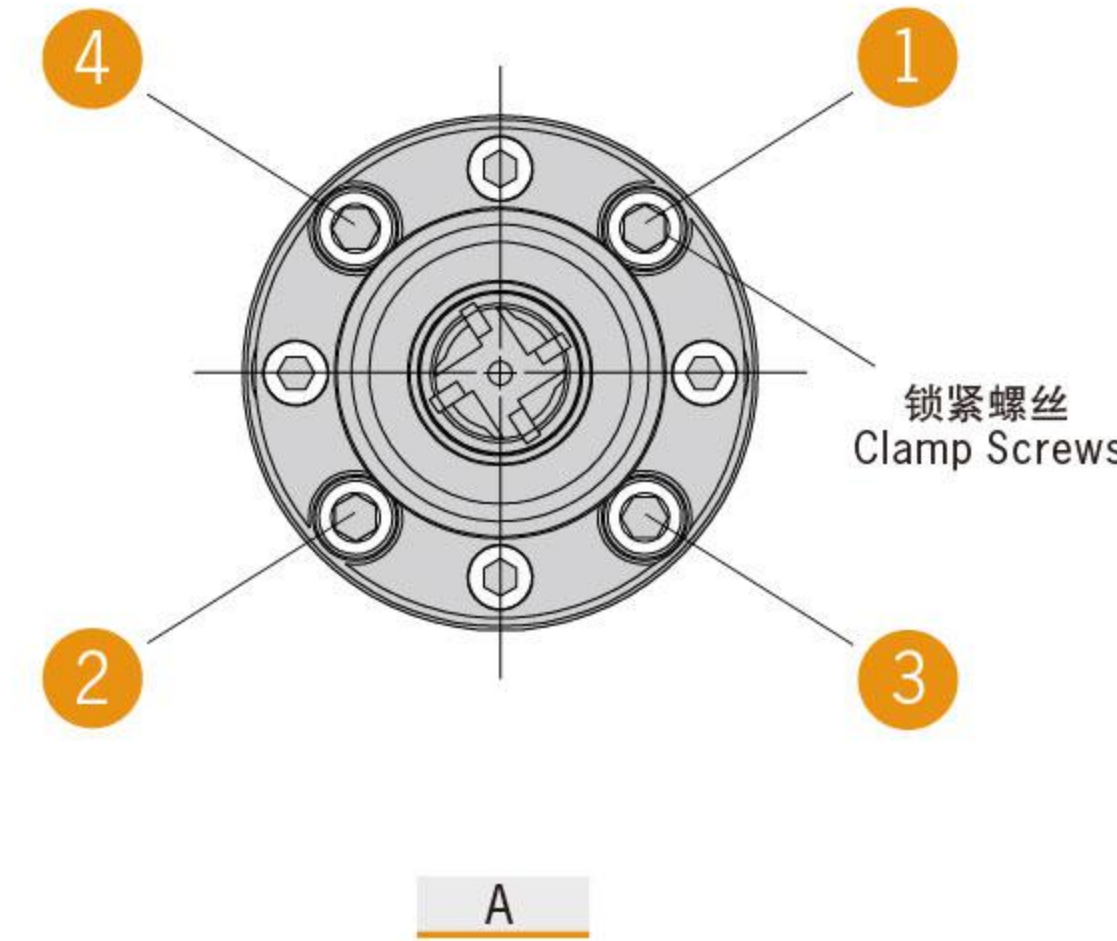
DHP-Z Adjustable Hydraulic Chuck/DSK-Z Adjustable Precision Collet Chuck  
DHP-Z 可调液压刀柄/DSK-Z 可调精密筒夹刀柄

## 操作说明 / Instruction

### 步骤一 Step one

■根据图 A 操作端面上的 4 颗锁紧螺丝,保持轻度锁紧力,从而避免后续调节产生大幅度变化;锁紧操作以对角线方式完成,以确保向后拉力平行。

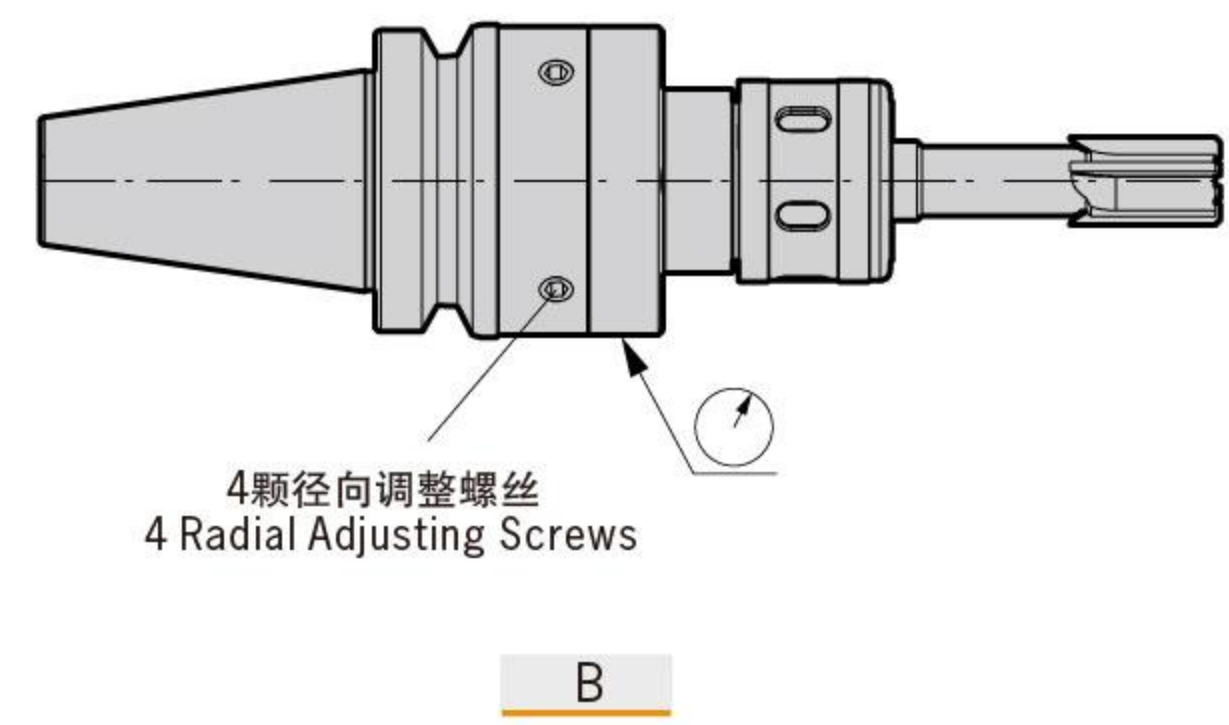
■Gently tighten 4pcs clamp screws on the shank of the tool as in figA, so as to avoid excessive changes in subsequent adjustments. Clamping screws should be done in a diagonal manner to ensure parallel pull back.



### 步骤二 Step two

■根据图 B 操作外径上的 4 颗径向调整螺丝,通过检测 ⊙ 指示的位置,发现径向跳动的高点,选择高点就近的径向调整螺丝操作锁紧量,从而推动内部机构修正同轴度。

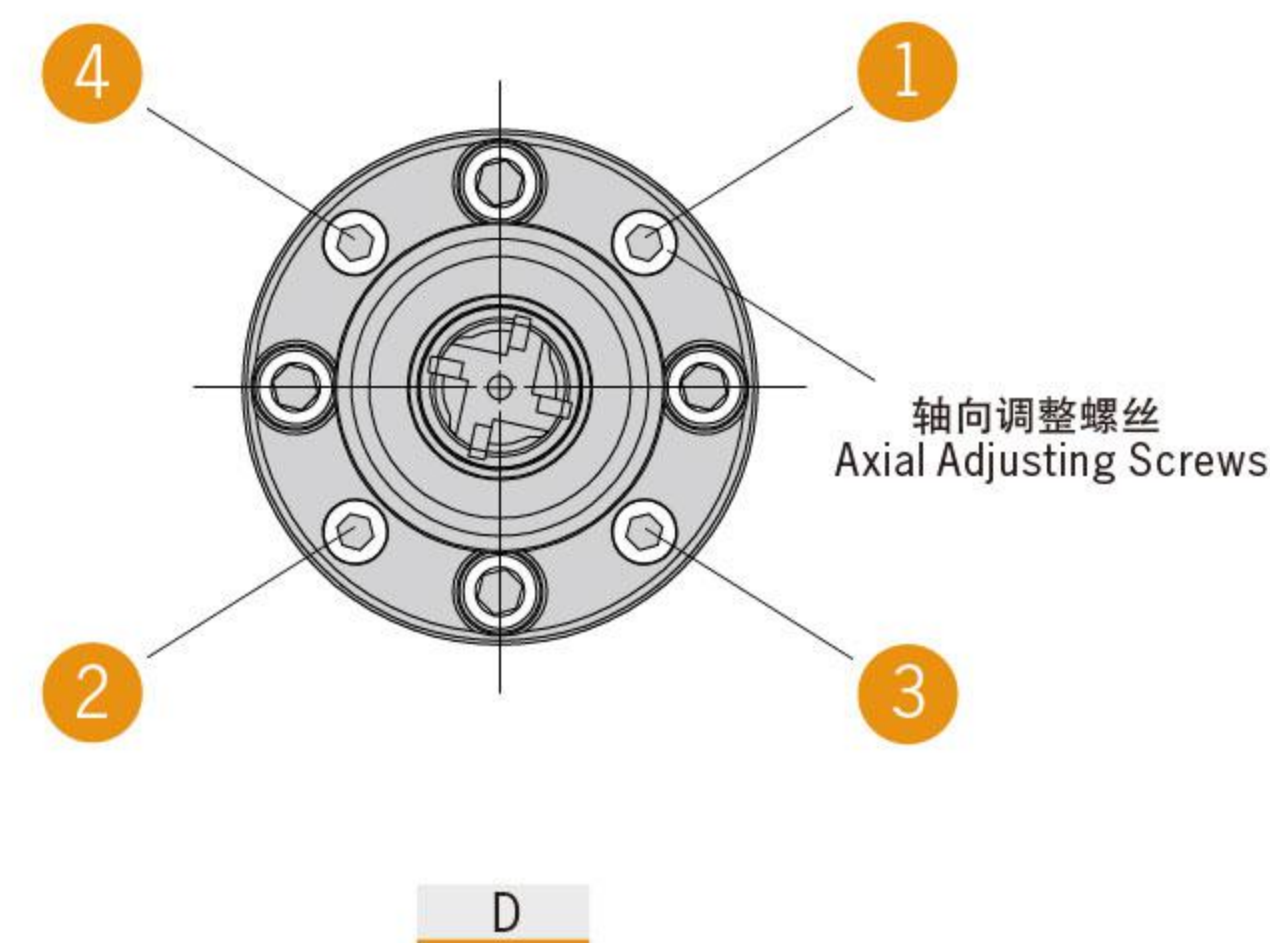
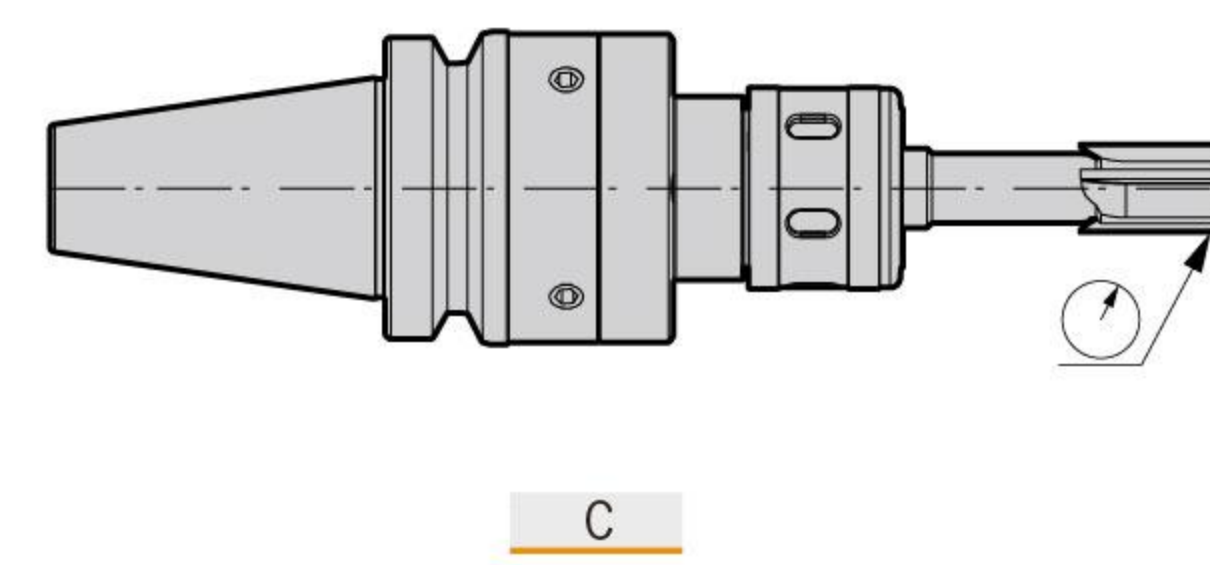
■Adjusting 4pcs radial adjusting screws as in figB. The "high spot" will become apparent by checking the spindle on ⊙. Gently tighten the nearest radial adjusting screw to push the tool and correct coaxiality.



### 步骤三 Step three

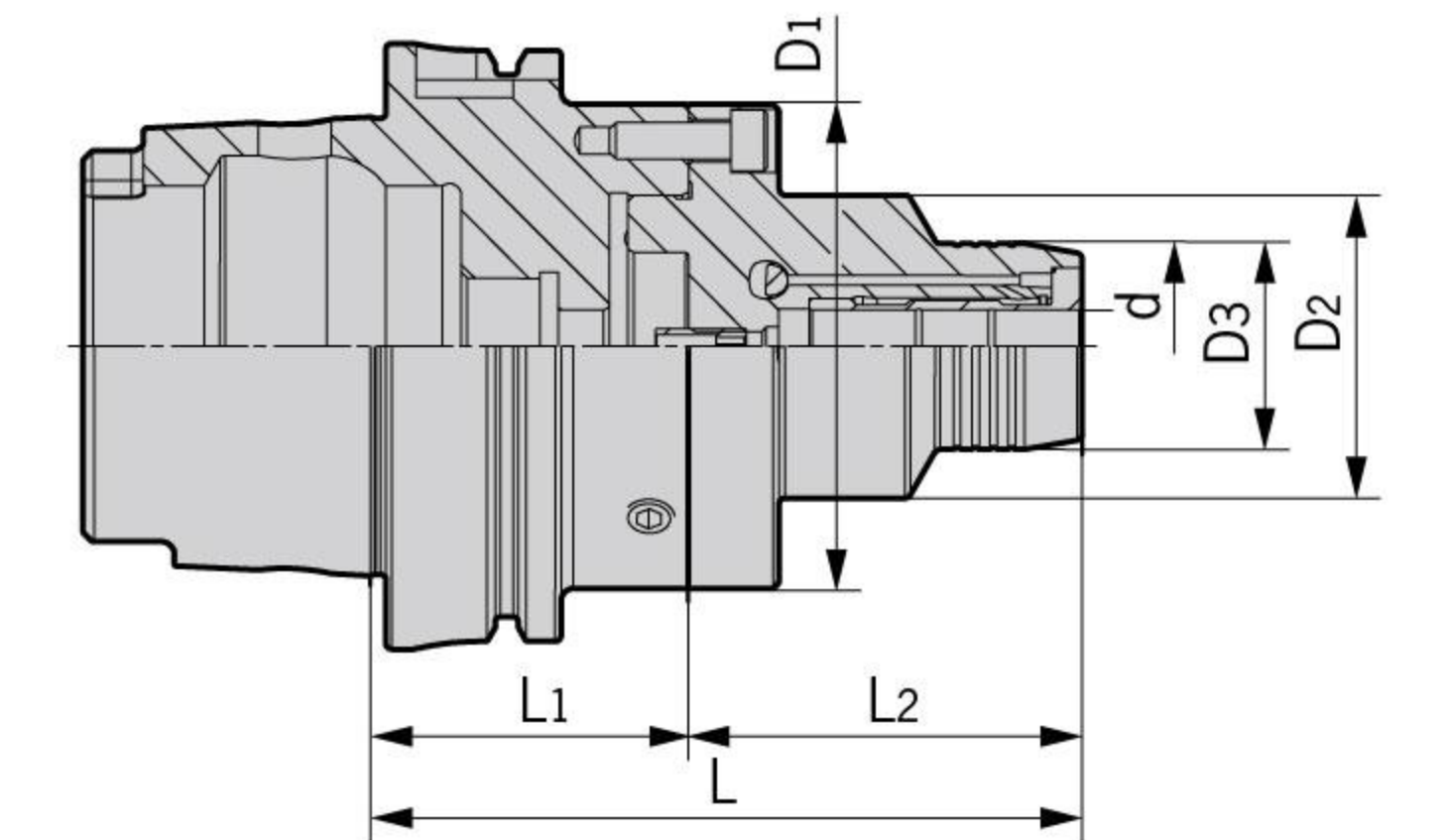
■根据图 C 通过检测 ⊙ 指示的刀刃位置,发现各个刀刃径向跳动的高点,根据图 D 选择高点就近的轴向调整螺丝操作锁紧量,从而偏摆内部机构修正同轴度。调整结果满足要求后,根据图 A 操作端面上的 4 颗锁紧螺丝,以对角线方式完成锁紧。

■According to blade position shown on ⊙ as in figC, the "high spot" will be found. If the tool is running blade high then the relevant axial adjusting screws must be tightened to correct coaxiality as in figD. Until the adjustment result meets the requirements, tighten screws in a diagonal manner as in figA.



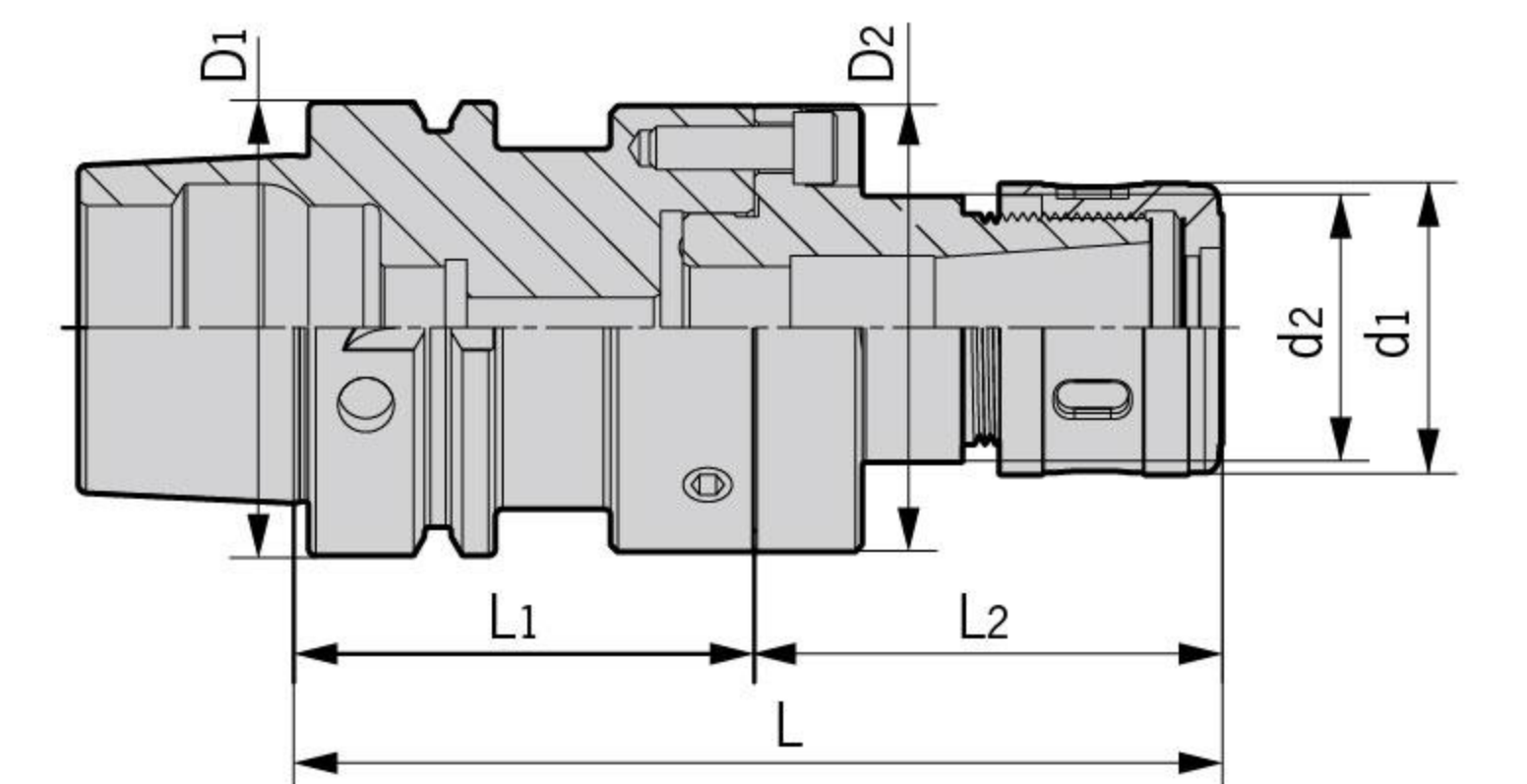
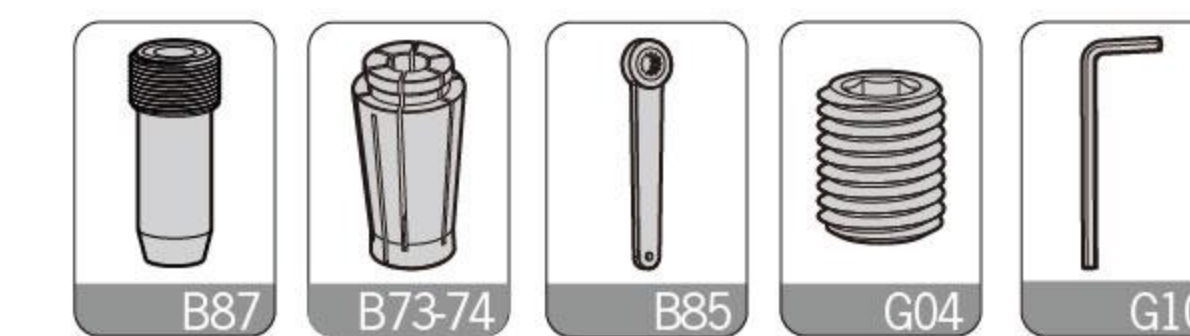
# DHP-Z/DSK-Z

HSK-DHP-Z Adjustable Hydraulic Chuck  
HSK-DHP-Z 可调液压刀柄



| 型号<br>Specification | D1 | D2 | D3 | d  | L   | L1 | L2 | 压紧螺钉<br>Insert Screw | 适用筒夹<br>Suit collet | 重量<br>Weight |
|---------------------|----|----|----|----|-----|----|----|----------------------|---------------------|--------------|
| HSK63A- DHP12Z-125  | 80 | 50 | 34 | 12 | 125 | 60 | 65 | M080U120-D           | D12/OD12            | 2.48         |
| DHP16Z-140          | 80 | 50 | 38 | 16 | 140 | 60 | 80 | M080U140-D           | -                   | 2.57         |
| DHP20Z-140          | 80 | 50 | 43 | 20 | 140 | 60 | 80 | M080U140-D           | D20/OD20            | 2.62         |
| HSK100A- DHP12Z-115 | 80 | 50 | 34 | 12 | 115 | 50 | 65 | M080U120-D           | D12/OD12            | 3.74         |
| DHP16Z-130          | 80 | 50 | 38 | 16 | 130 | 50 | 80 | M080U140-D           | -                   | 3.76         |
| DHP20Z-130          | 80 | 50 | 43 | 20 | 130 | 50 | 80 | M080U140-D           | D20/OD20            | 3.79         |
| DHP25Z-155          | 90 | 57 | 57 | 25 | 155 | 65 | 90 | M100U120-D           | -                   | 5.28         |
| DHP32Z-155          | 90 | 60 | 60 | 32 | 155 | 65 | 90 | M100U180-D           | D32/OD32            | 5.23         |

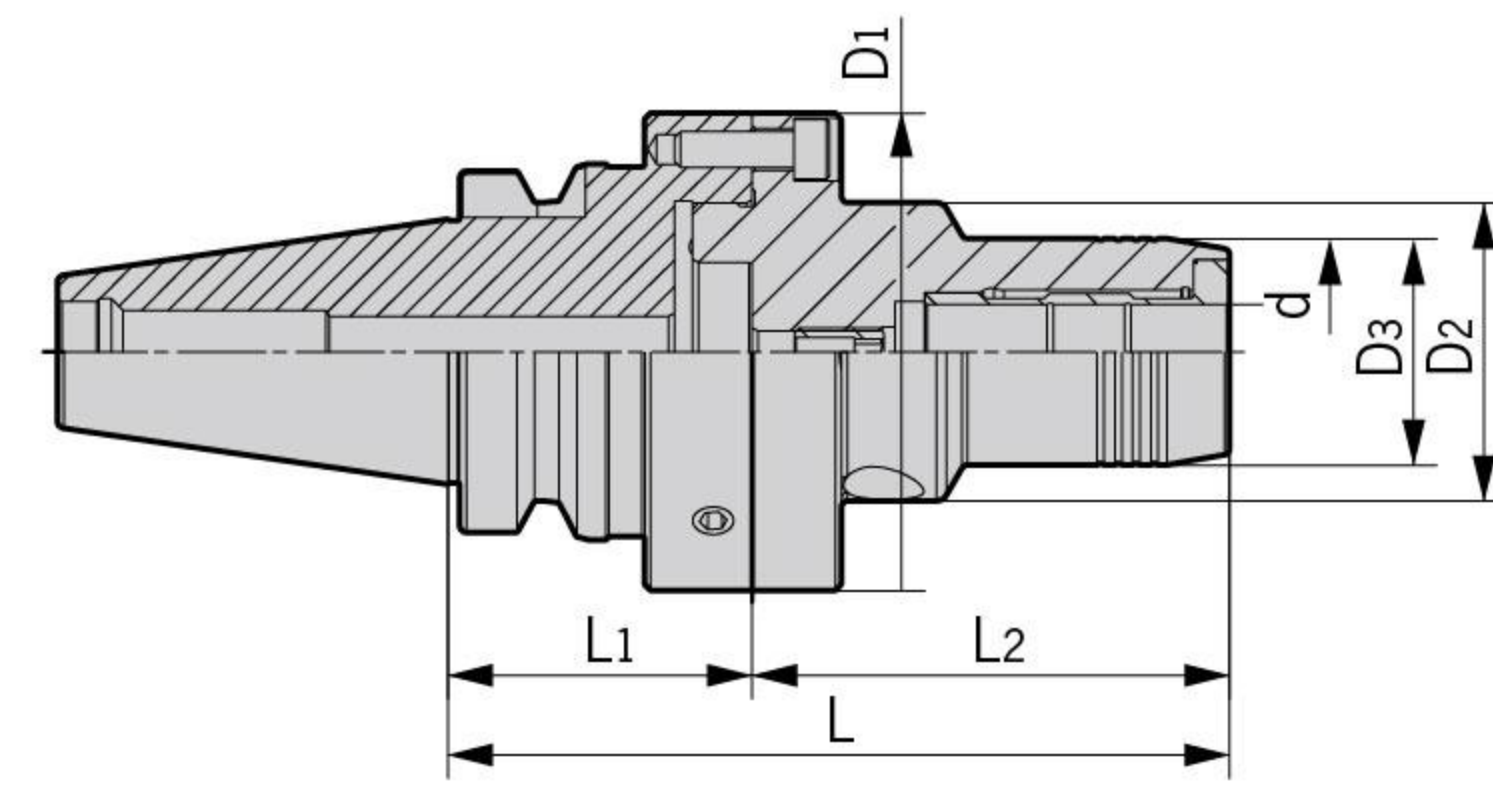
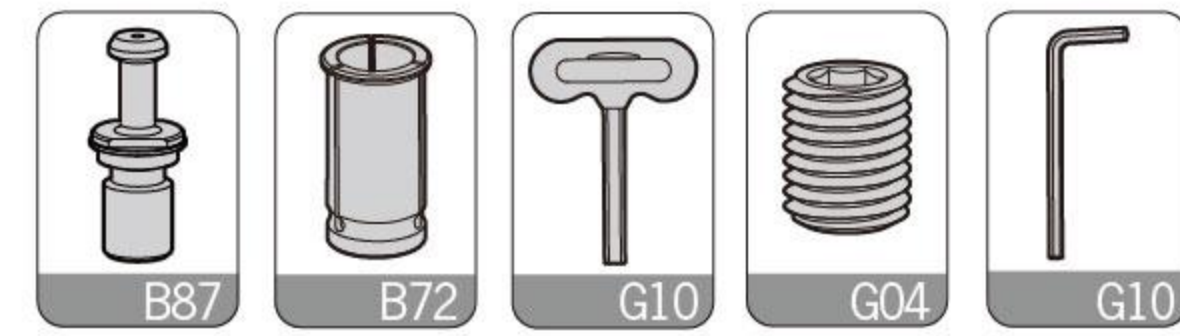
HSK-DSK-Z Adjusting Precision Collet Chuck  
HSK-DSK-Z 可调精密筒夹刀柄



| 型号<br>Specification | D1  | D2 | d1   | d2 | L   | L1 | L2 | 适用筒夹<br>Suit collet | 重量<br>Weight |
|---------------------|-----|----|------|----|-----|----|----|---------------------|--------------|
| HSK50A- DSK16Z-127  | 50  | 62 | 40.5 | 37 | 127 | 62 | 65 | DSK16               | 1.52         |
| HSK63A- DSK16Z-127  | 63  | 62 | 40.5 | 37 | 127 | 62 | 65 | DSK16               | 1.86         |
| HSK100A- DSK16Z-115 | 100 | 62 | 40.5 | 37 | 115 | 50 | 65 | DSK16               | 3.01         |
| DSK25Z-135          | 100 | 80 | 55   | 55 | 130 | 50 | 80 | DSK25               | 4.01         |

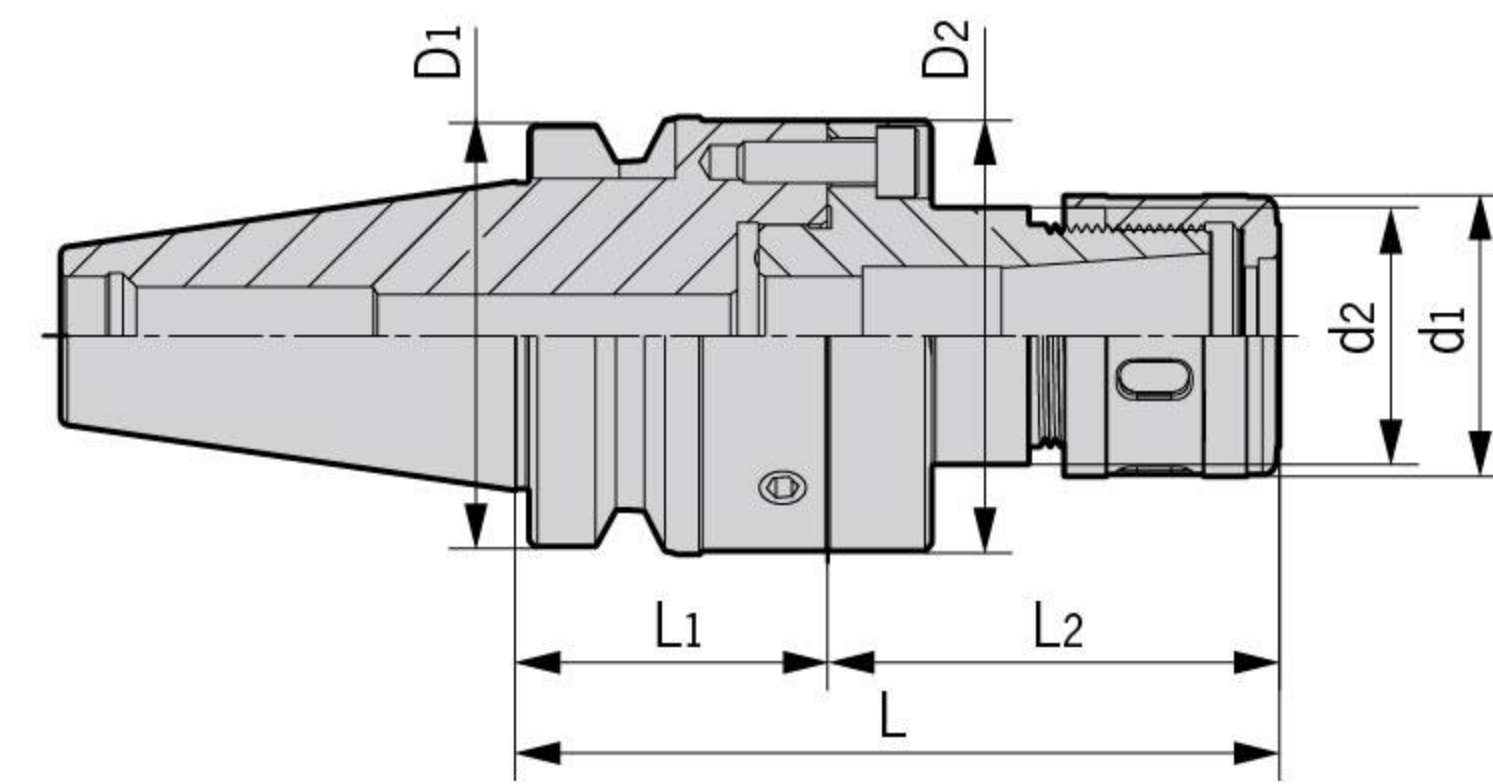
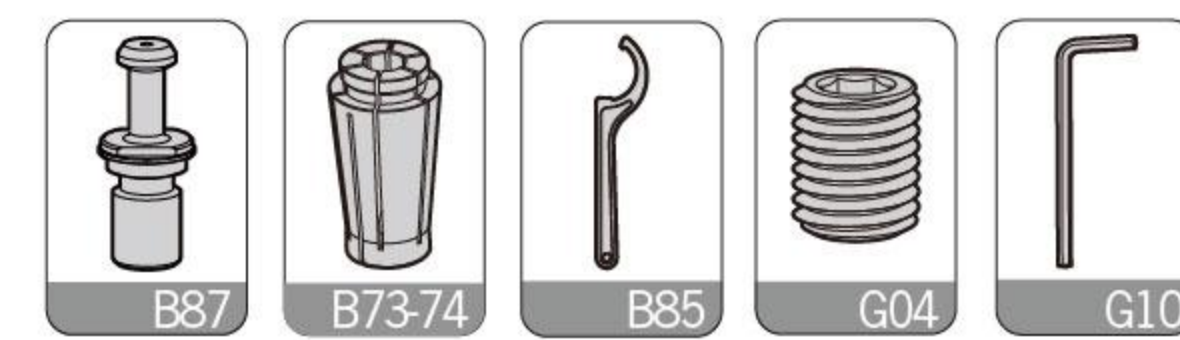
# DHP-Z/DSK-Z

BT-DHP-Z Adjustable Hydraulic Chuck  
BT-DHP-Z 可调液压刀柄



| 型号<br>Specification     | D1 | D2 | D3 | d  | L   | L1 | L2 | 压紧螺钉<br>Insert Screw | 适用筒夹<br>Suit collet | 重量<br>Weight |
|-------------------------|----|----|----|----|-----|----|----|----------------------|---------------------|--------------|
| <b>BT40-</b> DHP12Z-116 | 80 | 50 | 34 | 12 | 116 | 51 | 65 | M080U120-D           | D12/OD12            | 2.71         |
| DHP16Z-131              | 80 | 50 | 38 | 16 | 131 | 51 | 80 | M080U140-D           | -                   | 2.73         |
| DHP20Z-131              | 80 | 50 | 43 | 20 | 131 | 51 | 80 | M080U140-D           | D20/OD20            | 2.77         |
| <b>BT50-</b> DHP12Z-121 | 80 | 50 | 34 | 12 | 121 | 56 | 65 | M080U120-D           | D12/OD12            | 5.21         |
| DHP16Z-136              | 80 | 50 | 38 | 16 | 136 | 56 | 80 | M080U140-D           | -                   | 5.23         |
| DHP20Z-136              | 80 | 50 | 43 | 20 | 136 | 56 | 80 | M080U140-D           | D20/OD20            | 5.27         |
| DHP25Z-148              | 90 | 57 | 57 | 25 | 148 | 58 | 90 | M100U120-D           | -                   | 6.02         |
| DHP32Z-148              | 90 | 60 | 60 | 32 | 148 | 58 | 90 | M100U180-D           | D32/OD32            | 6.04         |

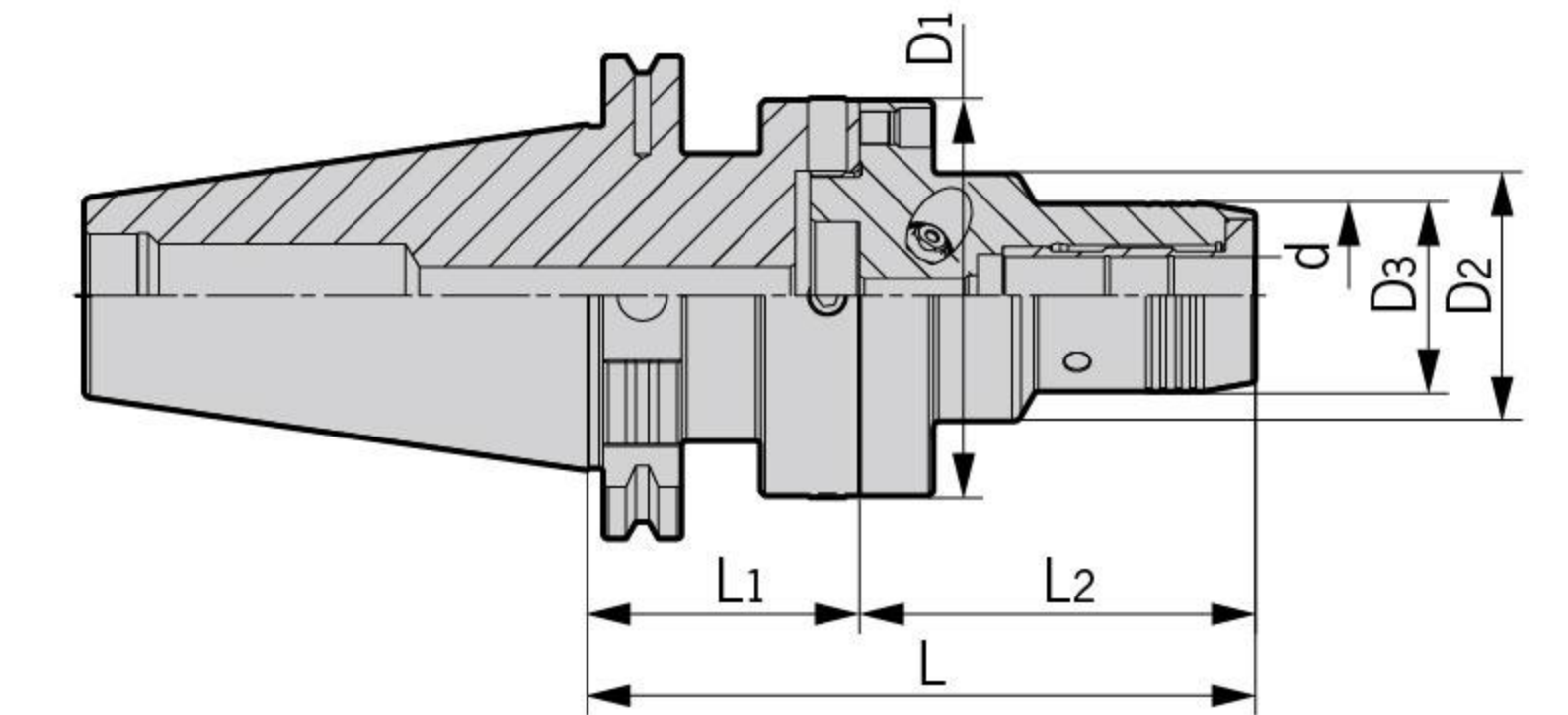
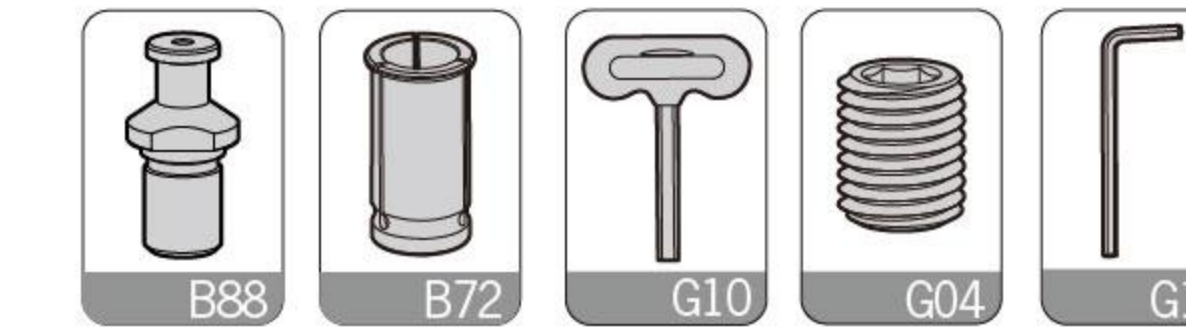
BT-DSK-Z Adjusting Precision Collet Chuck  
BT-DSK-Z 可调精密筒夹刀柄



| 型号<br>Specification     | D1  | D2 | d1   | d2 | L   | L1 | L2 | 适用筒夹<br>Suit collet | 重量<br>Weight |
|-------------------------|-----|----|------|----|-----|----|----|---------------------|--------------|
| <b>BT40-</b> DSK16Z-110 | 63  | 62 | 40.5 | 37 | 110 | 45 | 65 | DSK16               | 1.88         |
| DSK25Z-131              | 63  | 80 | 55   | 55 | 131 | 51 | 80 | DSK25               | 2.68         |
| <b>BT50-</b> DSK25Z-136 | 100 | 80 | 55   | 55 | 136 | 56 | 80 | DSK25               | 5.50         |

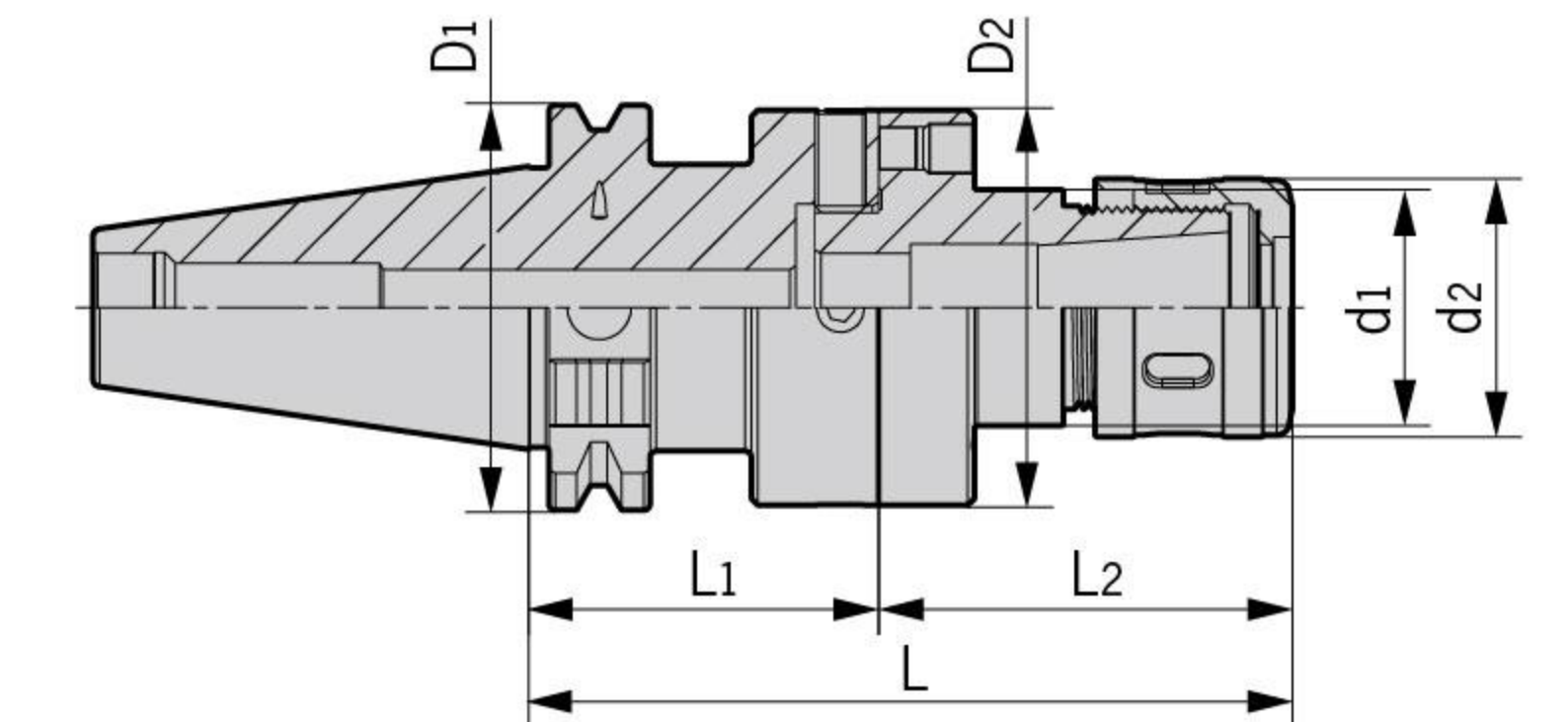
# DHP-Z/DSK-Z

SK-DHP-Z Adjustable Hydraulic Chuck  
SK-DHP-Z 可调液压刀柄



| 型号<br>Specification     | D1 | D2 | D3 | d  | L   | L1 | L2 | 压紧螺钉<br>Insert Screw | 适用筒夹<br>Suit collet | 重量<br>Weight |
|-------------------------|----|----|----|----|-----|----|----|----------------------|---------------------|--------------|
| <b>SK40-</b> DHP12Z-120 | 80 | 50 | 34 | 12 | 120 | 55 | 65 | M080U120-D           | D12/OD12            | 2.61         |
| DHP16Z-135              | 80 | 50 | 38 | 16 | 135 | 55 | 80 | M080U140-D           | -                   | 2.69         |
| DHP20Z-135              | 80 | 50 | 43 | 20 | 135 | 55 | 80 | M080U140-D           | D20/OD20            | 2.74         |
| <b>SK50-</b> DHP12Z-120 | 80 | 50 | 34 | 12 | 120 | 55 | 65 | M080U120-D           | D12/OD12            | 4.55         |
| DHP16Z-135              | 80 | 50 | 38 | 16 | 135 | 55 | 80 | M080U140-D           | -                   | 4.64         |
| DHP20Z-135              | 80 | 50 | 43 | 20 | 135 | 55 | 80 | M080U140-D           | D20/OD20            | 4.69         |
| DHP25Z-145              | 90 | 57 | 57 | 25 | 145 | 55 | 90 | M100U120-D           | -                   | 5.37         |
| DHP32Z-145              | 90 | 60 | 60 | 32 | 145 | 55 | 90 | M100U180-D           | D32/OD32            | 5.32         |

SK-DSK-Z Adjusting Precision Collet Chuck  
SK-DSK-Z 可调精密筒夹刀柄



| 型号<br>Specification     | D1    | D2 | d1   | d2 | L   | L1 | L2 | 适用筒夹<br>Suit collet | 重量<br>Weight |
|-------------------------|-------|----|------|----|-----|----|----|---------------------|--------------|
| <b>SK40-</b> DSK16Z-120 | 63.55 | 62 | 40.5 | 37 | 120 | 55 | 65 | DSK16               | 1.98         |
| DSK25Z-135              | 63.55 | 80 | 55   | 55 | 135 | 55 | 80 | DSK25               | 2.86         |
| <b>SK50-</b> DSK25Z-135 | 97.50 | 80 | 55   | 55 | 135 | 55 | 80 | DSK25               | 4.81         |